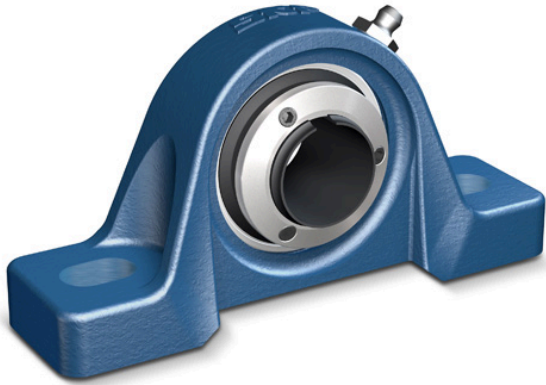




NTN BEARING USA CORP.

skf P2B 115-LF-AH Ball bearing plummer block units



Bearing No. P2B 115-LF-AH

P2B 115-LF-AH Bearing 2D drawings and 3D CAD models

mounting:	Two-Bolt Base
base width:	2.1300 in
d	1.9375 in
D	6.1800 in
bore type:	Round
maximum rpm:	4000 rpm
base to bore centerline:	2.2500 in
bolt size:	0.6250 in
housing material:	Cast Iron
lubrication type:	Lubrication Fitting
locking device:	Concentra Collar
series:	SY
overall length:	7.9900 in
replacement bearing:	YSP 210-115-SB-2F
overall height:	4.4900 in
manufacturer product page:	Click here
radial dynamic load capacity:	7900 lbf
manufacturer upc number:	7316574958153
radial static load capacity:	5220 lbf